



Post Office Box 3005
2831 Talleyrand Avenue
Jacksonville, Florida 32206-0005
www.jaxport.com

May 12, 2023

ADDENDUM NO. 02
TO
SPECIFICATIONS AND CONTRACT DOCUMENTS
FOR
INVITATION TO BID
SSA JACKSONVILLE CONTAINER TERMINAL
PHASE 8
JPA CONTRACT NO. C-1772A

The item(s) of this Addendum shall modify and become a part of the contractual documents for this project as of this date.
(Failure to acknowledge this addendum will be grounds for rejection of bid.)

PHYSICAL CHANGES TO CONTRACT SPECIFICATIONS

Item No. 01

Reference to Drawing 008-C-02803 **REMOVE** and **REPLACE** with **REVISED** Drawing 008-C-02803 Rev1 (See Attachment No. 02)

ATTACHMENTS TO CONTRACT SPECIFICATIONS

Attachment No. 01

Response to Questions.

Attachment No. 02

REVISED Drawing 008-C2803-rev1

Acknowledgment of the following addenda is hereby made:

Addendum #2, Dated: _____ Initials _____

Company _____

NOTE: THIS ADDENDUM SHALL BE ACKNOWLEDGED IN YOUR BID SUBMISSION, FAILURE TO ACKNOWLEDGE ADDENDUM WILL BE GROUNDS FOR REJECTION OF BID.

PLEASE VISIT <http://www.jaxport.com/procurement/active-solicitations> OR CALL THE PROCUREMENT DEPARTMENT AT (904) 357-3017, PRIOR TO THE BID OPENING TO DETERMINE IF ANY ADDENDA HAVE BEEN RELEASED ON THIS CONTRACT.



Post Office Box 3005
2831 Talleyrand Avenue
Jacksonville, Florida 32206-0005

INVITATION TO BID

JPA CONTRACT NO.: C-1772A SSA JACKSONVILLE CONTAINER TERMINAL – PHASE 8

RESPONSE TO QUESTIONS

1. Is there a proposed plan showing the layout of the Construction Barrier and Security Fence for Phase Separation?

ANSWER: Drawing 008-C-5302 Detail 5 shows layout of construction barriers at phase separations. Security fence details are shown on 008-C-5303.

2. I know it's one day after the question deadline however please consider adding more time for completion, specifically due to electrical procurement. Acquiring the poles and electrical equipment can take 6-12 months from submittal approval. Also, are we required to leave onsite all the limerock and soils removed in order to install new base? If so, where is this location?

ANSWER:

Part 1 – Bidder shall provide evidence of estimated lead time for procurement of electrical equipment and HMLPs with bid. Bidders shall provide schedule showing procurement and construction. Bids will be assessed based on closest compliance with 240-day schedule. Impacts of procurement time on schedule will be discussed with preferred bidder to optimize schedule before award.

Part 2 – Contractor is responsible for removing surplus material from Blount Island. Excavated limerock shall not be used in new pavement base.

3. I would like to ask to extend the question deadline through the end of the week. I would also like to point out the following:
 - 240 calendar days to achieve substantial completion seems improbable due to electrical material procurement. Please consider adding more time.
 - 18% DBE seems high for a project with a large volume of materials. Please consider lowering to a more reasonable 10%?

ANSWER:

- Bidder shall provide evidence of estimated lead time for procurement of electrical equipment and HMLPs with bid. Bidders shall provide schedule showing procurement and construction. Bids will be assessed based on closest compliance with 240-day schedule. Impacts of procurement time on schedule will be discussed with preferred bidder to optimize schedule before award.

Attachment No. 2

- After a thorough review of the Engineer's Estimates and related scope of work, we have arrived at the participation goal of 18%. Each division of labor has been incorporated into the goal and the certified Small Businesses are available for these sub-contracting opportunities. Assistance will be provided upon request

4. DWG 001-C5701 detail # 11 shows a Precast Concrete Bumper. Are these required? If so, is there a plan which shows layout and the number required?

ANSWER: The correct reference is 008-C-5701. The precast concrete bumpers are standard details, but are not required in Phase 8 permanent works.

5. The bid form has an item for furnishing and installing a prefabricated restroom. The plans say by others. If we are to provide, please include a specification in the next addendum.

ANSWER: Please see attached Drawing 008-C-2803-Rev1 where the note "by others" has been removed. The prefabricated restroom is to be supplied and installed by the Contractor. Reference H in Bid Documents provides information regarding proposed prefabricated restroom, including floorplan and a quote from the manufacturer. Bidder shall obtain own quotes for bid. Equivalent or similar floorplans and manufacturers will be accepted, but adjustments to civil works to accommodate alternate restroom configuration shall be at Contractor's cost.

MATCHLINE - SEE SHEET 008-C-2802

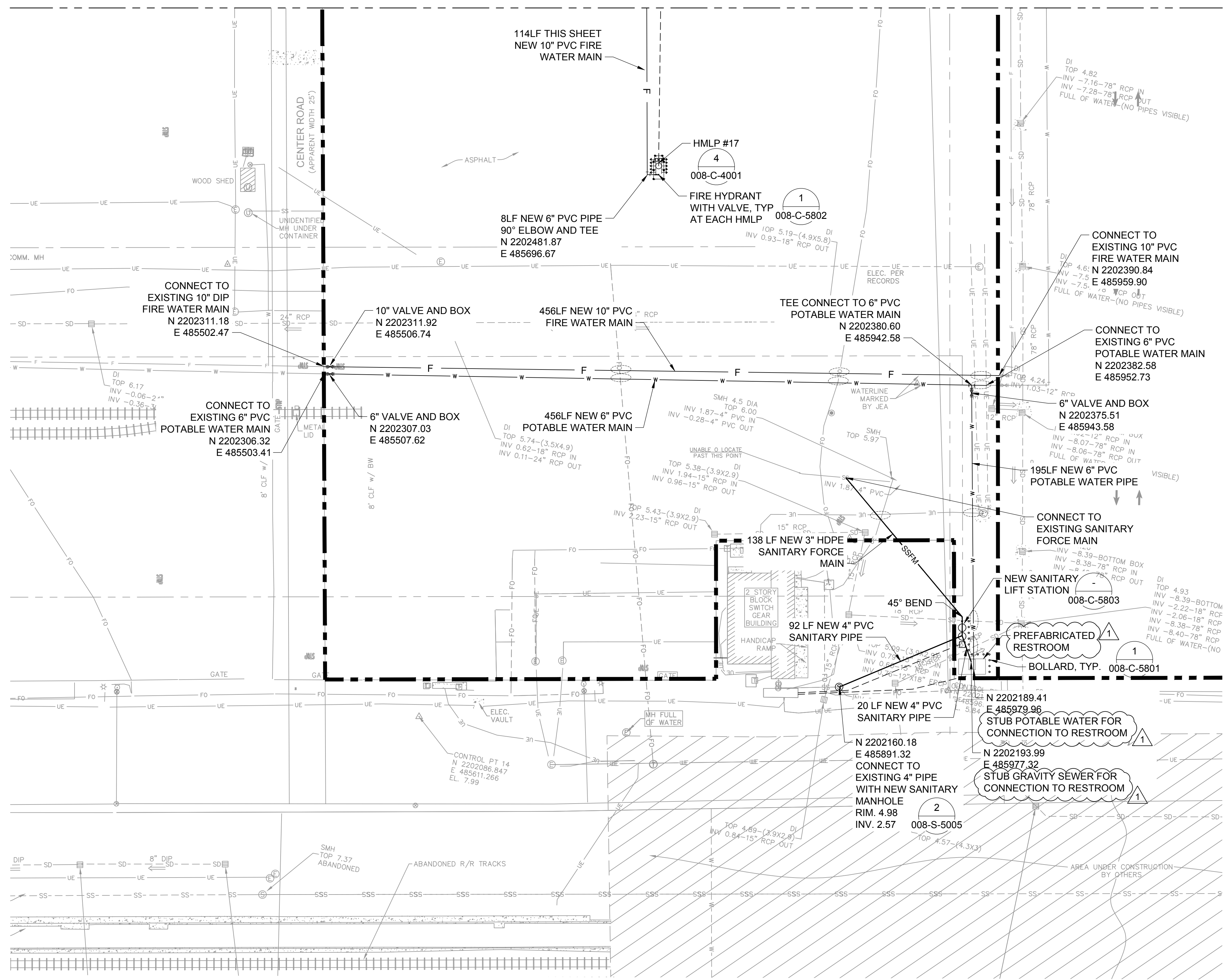
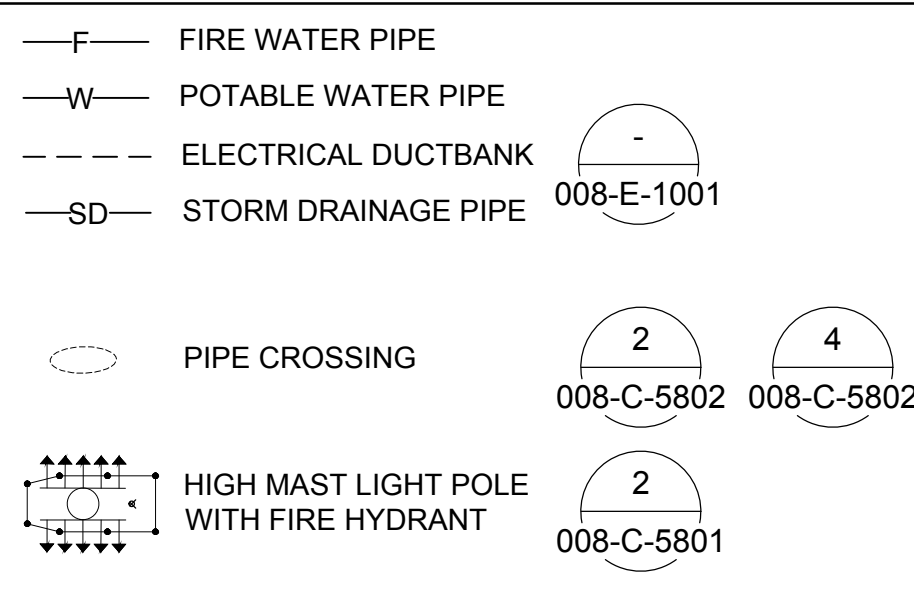
JACOBS ENGINEERING GROUP, INC.
200 W. FORSYTH ST., SUITE 1520
JACKSONVILLE, FL 32202 CA# 2822

PRINTED COPIES OF THIS DOCUMENT ARE NOT
CONSIDERED SIGNED AND SEALED. THE SIGNATURE
MUST BE VERIFIED ON ANY ELECTRONIC COPIES

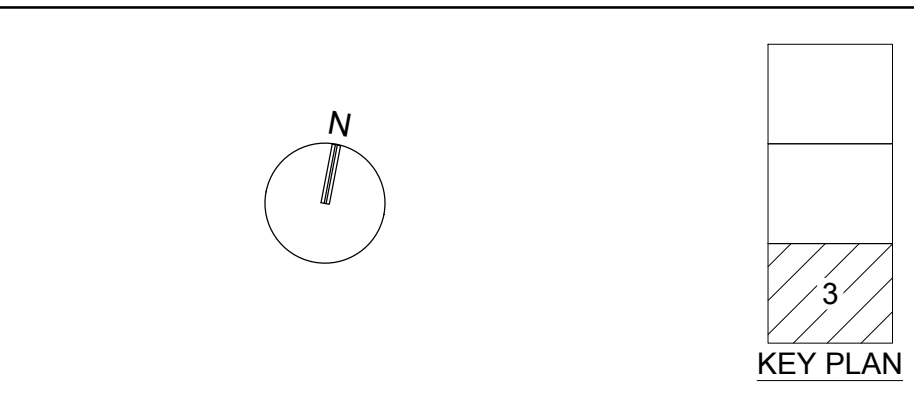
GENERAL NOTES

- REFER TO ELECTRICAL DRAWINGS FOR POWER AND COMMUNICATION DUCTBANK INFORMATION AND DETAILS.
- REFER TO DRAWING 008-C-4001 FOR DETAILS OF HMLP LAYOUT.

LEGEND



GRAPHIC SCALE/KEY PLAN



JCT WEST IMPROVEMENTS
SSA JACKSONVILLE CONTAINER TERMINAL
SSA ATLANTIC - JAXPORT
JACKSONVILLE, FLORIDA

JACOBS

CIVIL

UTILITY PLAN
SHEET 3 OF 3

DATE	03/10/2023
PROJ	008-C-2803
DWG	29OF 55
SHEET	

ISSUED FOR BID

REUSE OF DOCUMENTS: THIS DOCUMENT, AND THE IDEAS AND DESIGNS INCORPORATED HEREIN, AS AN INSTRUMENT OF PROFESSIONAL SERVICE, IS THE PROPERTY OF JACOBS AND IS NOT TO BE USED, IN WHOLE OR IN PART, FOR ANY OTHER PROJECT WITHOUT THE WRITTEN AUTHORIZATION OF JACOBS.

© JACOBS 2021. ALL RIGHTS RESERVED.