



The JAXPORT EXPRESS Project

EXemplifying Potential to Reduce Emissions with Sustainable Solutions

US Department of Transportation

Maritime Administration
Port Infrastructure Development Program (PIDP)

Appendix E: Maps

- **Strategic Location: Locations within 1-day truck drive**
- **Strategic Location: Terminal Locations**
- **Strategic Location: Highway Connections**
- **Blount Island Marine Terminal**
- **Talleyrand Marine Terminal**

Per the instructions in the official Notice of Funding Opportunity: “If possible, website links to supporting documentation should be provided rather than copies of these supporting materials.” Please find all supporting documentation at this link: <https://www.jaxport.com/grants>

STRATEGIC LOCATION



 98M Residents Within One-day Truck Drive

Florida's Population:

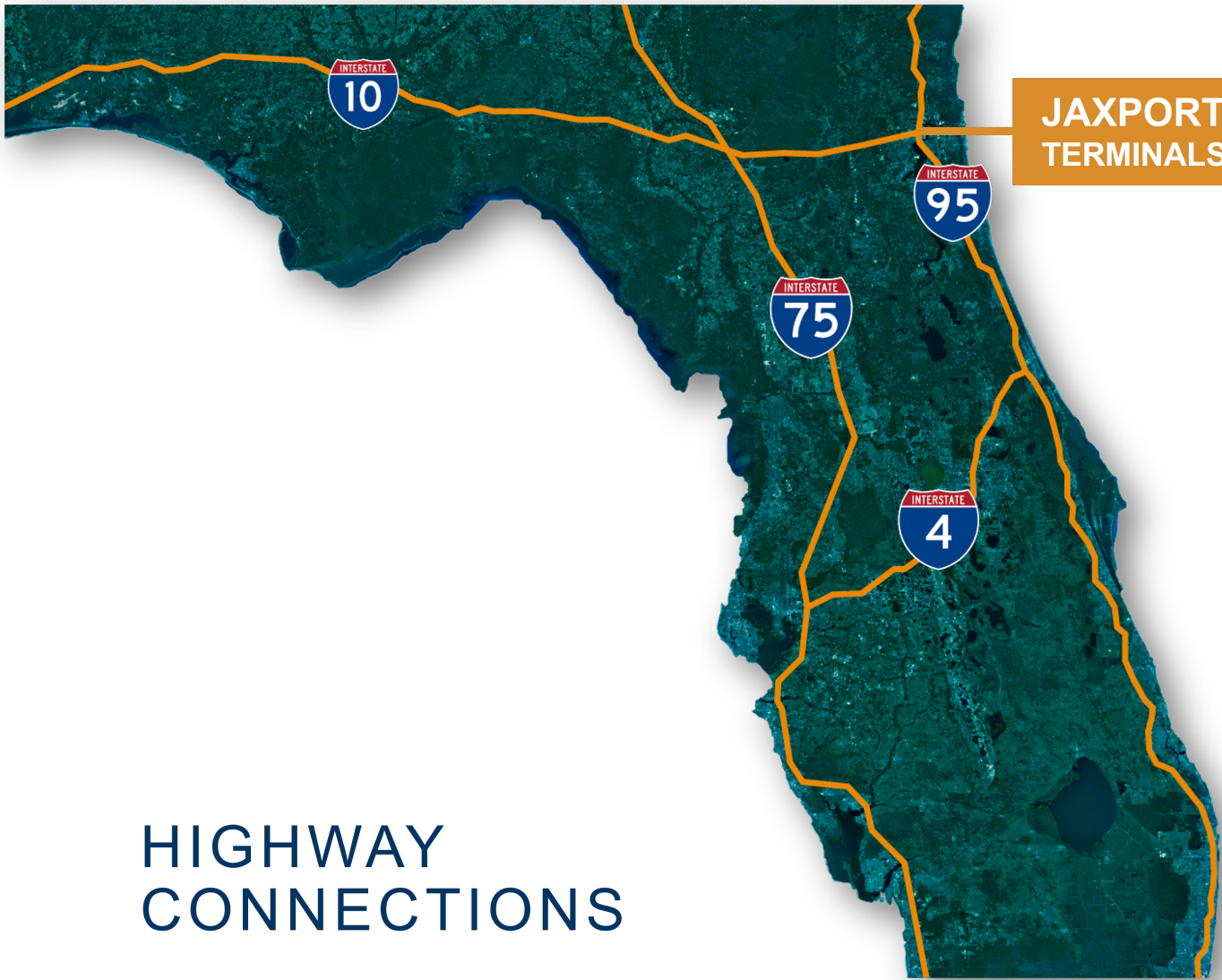
- 3rd Most Populous State In Nation - 21.6M Residents
- Best Access to densely populated Central Florida area

STRATEGIC LOCATION



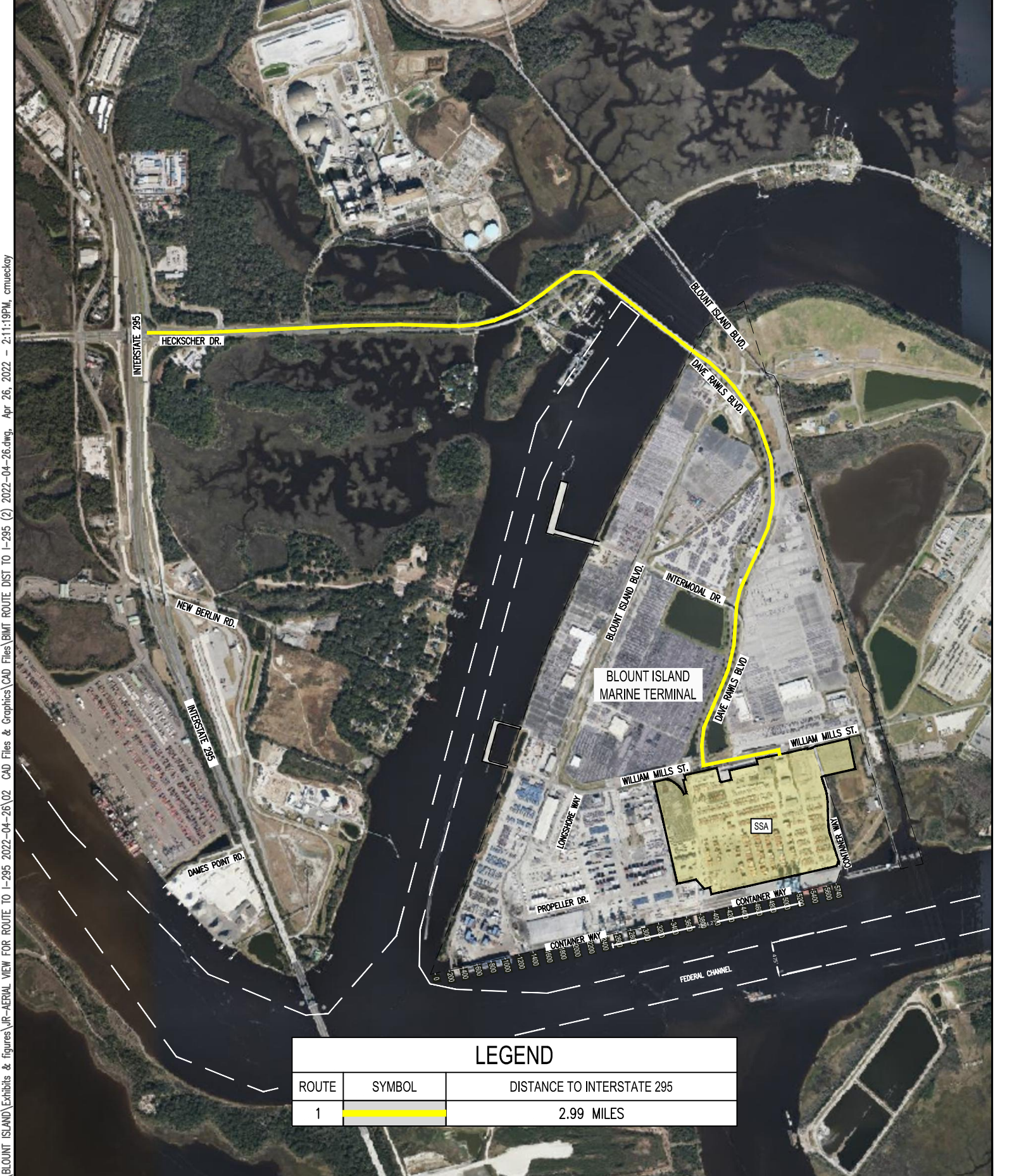
TERMINAL LOCATIONS



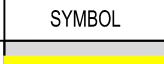


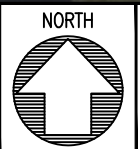
JAXPORT
TERMINALS

HIGHWAY CONNECTIONS



H:_eng\DRAWINGS\BLOUNT ISLAND\Exhibits & Figures\JR-AERIAL VIEW FOR ROUTE TO I-295 2022-04-26\02 CAD Files & Graphics\CAD Files\BMT ROUTE DIST TO I-295 (2). 2022-04-26.dwg, Apr 26, 2022 - 2:11:19PM, cmueckay

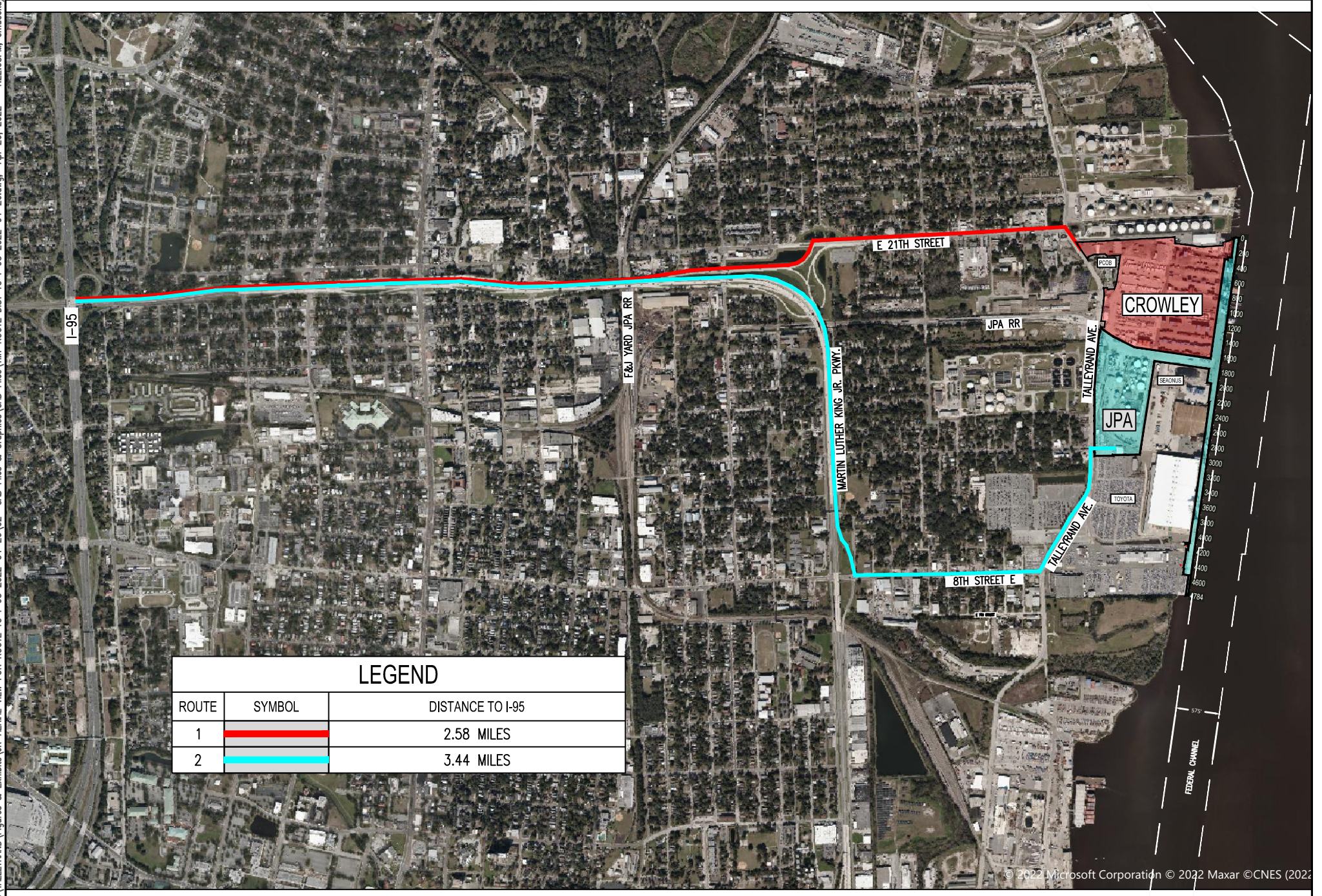
LEGEND		
ROUTE	SYMBOL	DISTANCE TO INTERSTATE 295
1		2.99 MILES





BLOUNT ISLAND MARINE TERMINAL
 2022

JAXPORT ENGINEERING &
 CONSTRUCTION DEPARTMENT
 2831 TALLEYRAND AVENUE
 JACKSONVILLE, FL 32206

SHEET	1 OF 1
DATE	4/26/22
SCALE	NTS



LEGEND		
ROUTE	SYMBOL	DISTANCE TO I-95
1		2.58 MILES
2		3.44 MILES



TALLEYRAND MARINE TERMINAL
2022

JAXPORT ENGINEERING &
CONSTRUCTION DEPARTMENT
2831 TALLEYRAND AVENUE
JACKSONVILLE, FL 32206

SHEET	1 OF 1
DATE	4/26/22
SCALE	NTS